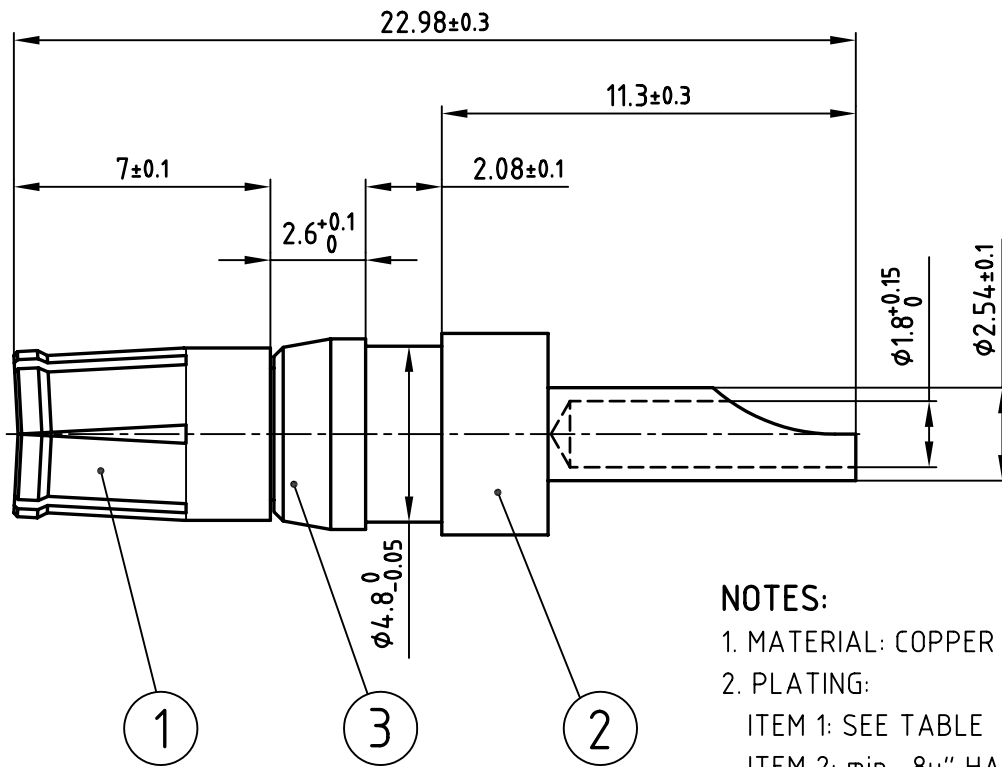
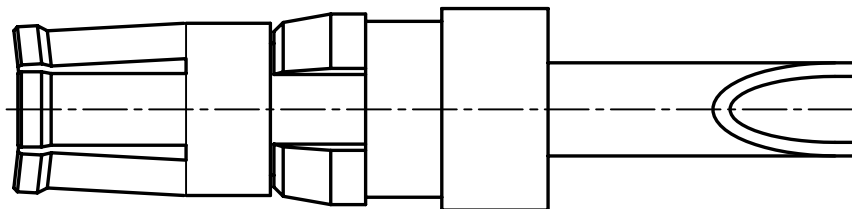


used for: D-SUB COMBINATION



NOTES:

- 1. MATERIAL: COPPER ALLOY
- 2. PLATING:
ITEM 1: SEE TABLE
ITEM 2: min. 8µ" HARD GOLD
OVER min. 50µ" NICKEL
ITEM 3: NICKEL PLATED



Plating item 1	Part-NO. CONEC
min. 30µ" HARD GOLD OVER min. 50µ" NICKEL	132C10019X
min. 50µ" HARD GOLD OVER min. 50µ" NICKEL	132J10019X



THIS DRAWING MAY NOT BE COPIED OR REPRODUCED IN ANY WAY, AND MAY NOT BE PASSED ON TO A THIRD PARTY WITHOUT WRITTEN PERMISSION.
 OWNERSHIP AND COPYRIGHT OF CONEC GmbH
 DO NOT ALTER CAD DRAWING BY HAND

tolerance		ISO 2768-m			
1998	date	name		title:	
drawn	23.03.	Barcinski		HIGH POWER CONTACT FEMALE SOLDER CUP 10A D-SUB COMBINATION	
appd.	23.03.	Mickenbecker			
norm					
d-old	SK211H10			dwg no:	
				CAD/ REL.13	
				DIN-A	
rev.	description	date	name	13K11E3A	
				product no: SEE TABLE	

scale: 5:1	
material: SEE NOTES	
title: HIGH POWER CONTACT FEMALE SOLDER CUP 10A D-SUB COMBINATION	
dwg no: CAD/ REL.13	
DIN-A 4	
sh: 1/1	
product no: SEE TABLE	